

What Does it Cost When Your Network Goes Down?

We all dread the idea of network outages. They are an unfortunate, expensive reality. The losses from network outages vary depending on the industry. However, one thing remains common: one outage can make or break an organization.

Indeed, network outages can be costly:

44%

of companies surveyed said an hour of downtime can exceed \$1M

91%

said that an hour of downtime averages over \$300,000 because of lost business, productivity, and remediation

Some costs don't have a dollar amount associated with them such as the cost of the interruptions when entire teams have to be re-tasked to deal with an outage. This re-tasking keeps them from doing their everyday productive work.

To calculate network downtime and understand the probable downtime cost for your company, you can use the following formula:

Downtime cost =
total minutes of downtime X **the cost per minute**

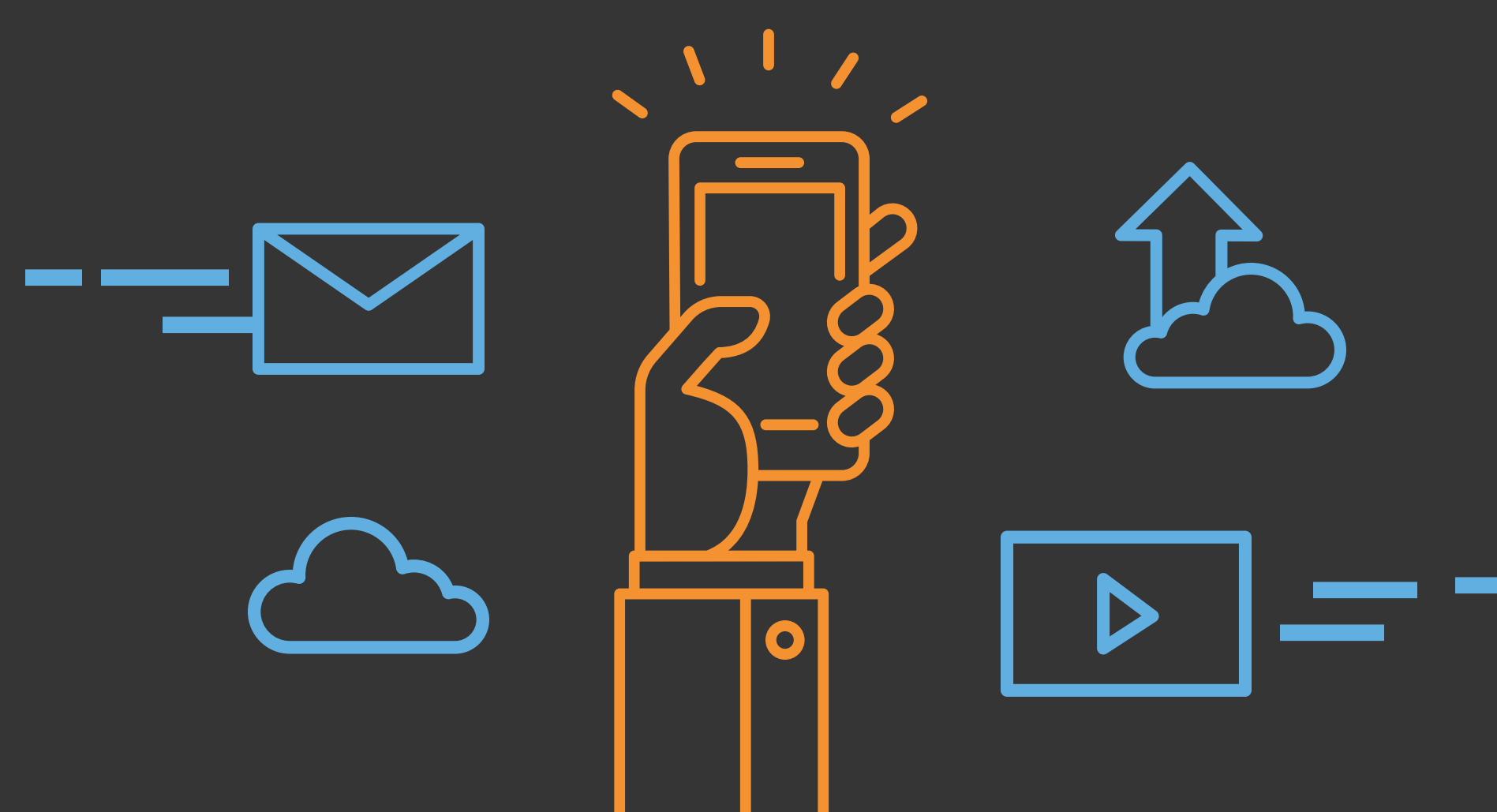


What you need is a way to reduce your risk of downtime. One way to do this is with an SD-Internet solution. It offers bi-directional Quality of Service (QoS) that ensures high performance voice and data for your business critical applications.

Allstream's SD-WAN or SD-Internet solution can reduce downtime and save you money.

You'll never have to worry about internet or network downtime with automatic failovers. And if something does go wrong, our dedicated account team and agile repair center give you the proper support for real-time resolutions.

Contact us to learn more.



allstream